

**EXHIBIT B: PLAT OF SURVEY**

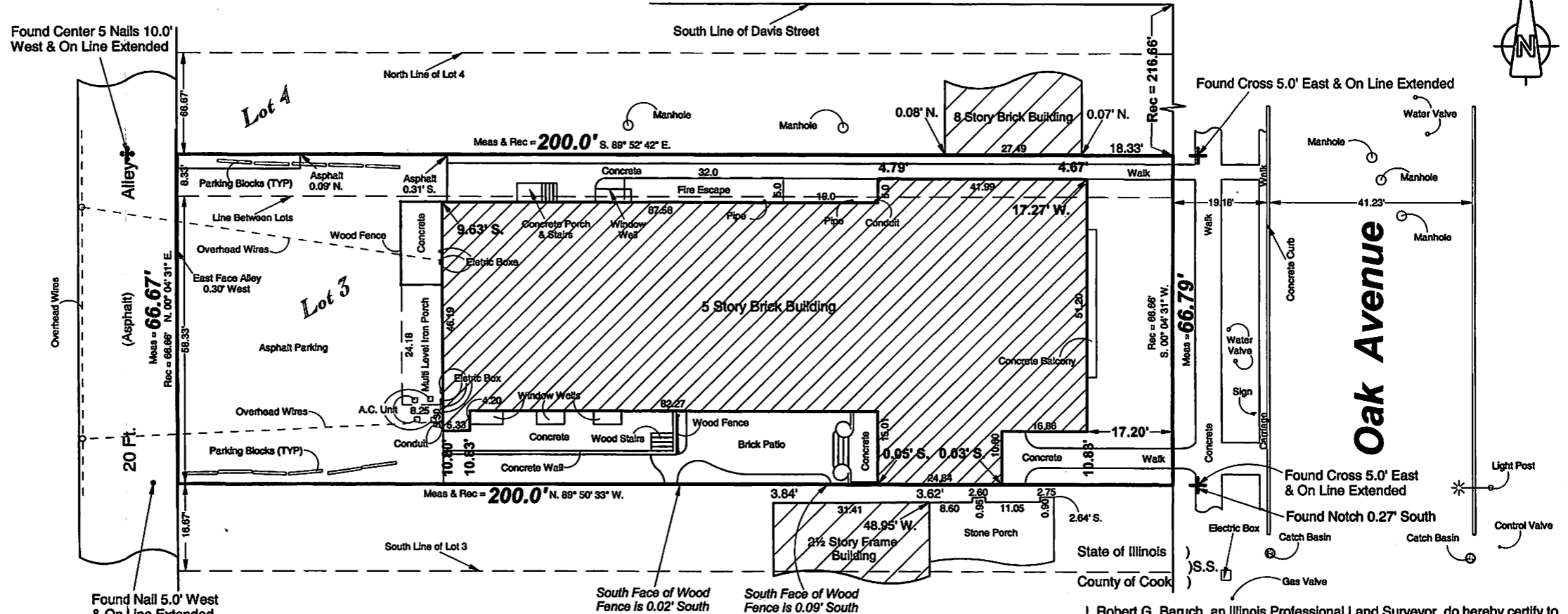
6415 N. Caldwell Ave.  
Chicago, Il. 60646

# ALTA/ACSM Land Title Survey

by Central Survey Company, Inc.

Phone (773) 631-5285  
Fax (773) 792-0879  
www.Centralsurvey.com

**Legal Description**  
The North 58 1/3 feet of Lot 3 and the South 8 1/3 feet of Lot 4 in Block 61 in Evanston in Section 18, Township 41 North, Range 14 East of the Third Principal Meridian, in Cook County, Illinois  
Commonly Known as: 1566 Oak Ave., Evanston, Illinois  
Area of Land Described: 13,346.13 Sq. Ft.



**Legend**

- N. = North
- S. = South
- E. = East
- W. = West
- (TYP) = Typical
- Rec = Record
- Meas = Measure
- St. = Street
- Ave. = Avenue

Scale: 1 inch equals 15 Feet.

Ordered By: Aronberg

Order Number: 1566

Assume no dimension from scaling upon this plat. Compare all points before building and report any difference at once. For building restrictions refer to your abstract, deed, contract and local ordinances.

I, Robert G. Baruch, an Illinois Professional Land Surveyor, do hereby certify to 1566 Oak Avenue, LLC; First Equity Bank and Chicago Title Insurance Corporation that I made an on the ground survey per record description of the land shown hereon on October 18, 2006 and that this map or plat and the survey on which it is based were made in accordance with the "Minimum Standard Detail Requirements for ALTA/ACSM Land Title Surveys," jointly established and adopted by ALTA and NSPS in 2005 and includes items 1, 4, 7(a), 8, 9, 10, 11(a) and 14 of Table A thereof Pursuant to the Accuracy Standards as adopted by ALTA and NSPS, and in effect on the date of this certification, I further certify that in my professional opinion, as a land surveyor registered in the State of Illinois the Relative Positional Accuracy of this survey does not exceed that which is specified therein. This survey reflects matters of title as found in Chicago Title Insurance Corporation, case #1401, dated June 21, 2006.



This professional service conforms to current Illinois minimum standards for a boundary survey.

Dated this 18th day of October 2006

*Robert G. Baruch*

Robert G. Baruch P.L.S. #2366  
Professional Design Firm Land Surveying Corporation

(expires November 30, 2008)  
(License Number 184-004113)